

Feng Shui Mirror Foil

**Harmonizing geobiological turbulences,
certified moisture barrier and barrier against Radongas**

Vital - Energi® Product according to Dr. Jes T.Y. Lim

This **Feng Shui Mirror Foil** was charged energetically with Shen-Ion HarmoNIK® frequencies. In combination with the imprinted symbols *Flower of Life* and *Venusflower* this helps to harmonize geobiological turbulences and to enhance vitalenergy in rooms and buildings. This Feng Shui Mirror Foil is recommended by buildingbiology and tested and certified by Qi-Mag International Feng Shui & Geobiology Institute.

This **Feng Shui Mirror Foil** is a certified vapour barrier and a protective foil against radioactive Radongas.

Manufacturer: WIKA Isolier- und Dämmtechnik GmbH, Germany	
Technical Data: 01.06.2015	
Structure Feng Shui Mirror Foil:	Delivery form Feng Shui Mirror Foil:
PE - Film Thickness: approx. 40 µm	1 Roll : 1 m wide, 50 m long = 50 m²
Lamination – PE Surface weight 23 g/m²	1 Palett: 32 rolls = 1600 m²
Aluminium foil Thickness: approx. 30 µm	DIN certified:
Lamination – PE Surface weight 23 g/m²	DIN EN 13967 Plastic material to protect the construction work from ascending soil moisture
PE - Film Thickness: approx. 40 µm	DIN EN 13984 Moisture barrier product type A
Thickness: 0.17 mm	
sd value: 1500 m	
Fire classification E	
Weight: approx. 15 kg / roll	

Distribution, Measuring, Concept Planning, Building Biology:

Dipl. Biol. Pamela Jentner, OrangePep GmbH & Co.KG

Unterer Graben 65

D - 85354 Freising, Germany

Tel +49 (0) 8161.688.87

Fax+49 (0) 8161.688.53

info@orangepep.de

www.orangepep.de

Handling of the Feng Shui Mirror Foil:

Feng Shui Mirror Foil is to be rolled out, so that the imprinted side faces upwards.

The layers of **Feng Shui Mirror Foil** sheets should overlap 5 - 10 cm. The sheets of foil are welded together by means of a hot air gun. If liquefaction of the plastic layer is visible, the foil layers are pressed together by a metall roller. This technique creates an inseparable radon gas-tight and vapour and moisture-proof barrier layer. For welding the foil layers nothing but hot-air is required. This saves time and costs.

For connections at culverts please form sealing sleeves with **Feng Shui Mirror Foil** and weld them to the **Feng Shui Mirror Foil** layers. The sealing sleeve has to be connected gas-tight and moisture proof.

For connecting the **Feng Shui Mirror Foil** to components the foil must be installed 5 cm up the wall from the bottom and glued with a hybrid-adhesive, such as Ottocoll HiTack.

Any physical damage must be avoided. No gaps, cracks, holes or leakages!

Before doing further layer construction please visually check the **Feng Shui Mirror Foil**. If there is any damage, please eliminate it completely.

Implementation under floor screed:

Please prevent **Feng Shui Mirror Foil** from physical damage. Having very uneven subsoil or floor plate, it is recommended to install the protective membrane Wikaflor (200 g/sqm) under and on the **Feng Shui Mirror Foil** („sandwich-construction“). Please install the Feng Shui Mirror Foil shortly before implementing the floor screed. Construction work must not damage the Feng Shui Mirror Foil, no gaps, cracks, holes or leakages!

Implementation under base plates:

In new construction projects, the **Feng Shui Mirror Foil** should be installed preferably below the base plate. The exact placement of **Feng Shui Mirror Foil** (eg, above or below the insulation) must be coordinated with the responsible architects.

If you will use the **Feng Shui Mirror Foil** under the base plate as protective foil against radon gas, it should be noted that the foil is to be covered above and below with the protective membrane Wikaflor (200g / sqm) in "sandwich-construction“. Physical damage is to be avoided.

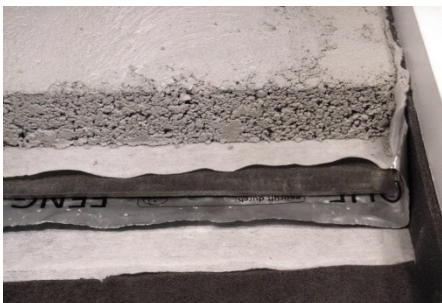
Implementation above base plates:

If remedial actions an installation above the existing concrete slab underneath the floor structure is necessary. The Feng Shui Mirror Foil must be pulled up above the horizontal moisture barrier in the walls. The adhesive on the wall should be carried out over the entire surface with "Ottocoll HiTack hybrid adhesive".

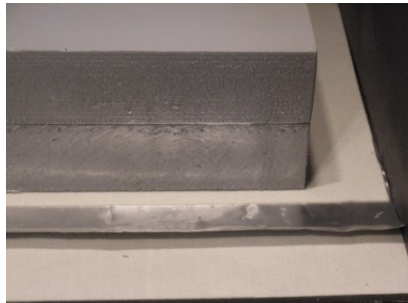
Feng Shui Mirror Foil VLIES / FLEECE:

If the floor covering, for example, tiles, carpet or parquet, should be glued directly to the Feng Shui Mirror Foil, the Feng Shui Mirror Foil VLIES/FLEECE is suitable for this purpose. Feng Shui Mirror Foil VLIES/FLEECE is laminated on both sides with an additional special fibre fleece.

The foil layers are welded with hot air by using a mounting strip of Feng Shui Mirror Foil.



Feng Shui Mirror Foil
below floor screed



Feng Shui Mirror Foil
below base plate



Feng Shui Mirror Foil VLIES/MESH
below different floor coverings

Note: All actions must be cleared with the responsible architects and planners. The operating specialist company is exclusively responsible for the professional installation of Feng Shui Mirror Foil. Our information sheet is to advise you to the best of our knowledge. All included information is based on empirical values under normal conditions. This is not a legally binding warranty. Our application and processing guidelines are meant only to assist our customers when using our products.